



Lesser Seen Fish of Grand Cayman!

Fishinar 2/11/2015, Jonathan Lavan – Instructor

Fish with a sighting frequency of 26- 30%

(all photos courtesy of ReefNet, Inc. unless otherwise indicated)

Questions? Feel free to contact me at jonathan@REEF.org

- **Brown Garden Eel**- 8 to 15, Up to 20 in. Brown to gray head and upper body. Live in colonies in entire dive range. Often tiny orangish spots on body; belly pale. Thin body; jutting jaw.



- **Dusky Damselfish** – 2 to 4, Up to 5 in. Dorsal and anal fins do not extend beyond where tail fin rays join tail base. Narrow dark edge on anal fin (Similar Longfin Damsel has bright blue edge on anal fin). Juvenile: Brilliant orange wash extends from snout across nape to end of spinous dorsal fin.



- **Cayman Cleaning Goby**– 1 to 1.25, Up to 1.5 in. Bright yellow “V” on snout continues from eye to tail as does a narrow lower stripe with a white bordering stripe above (not always obvious).



- **Doctorfish**– 6 to 12, Up to 15 in. Always has body bars (10-12) although they may be quite faint. Spine on caudal peduncle is dark. Dark area extends from base of pectoral fin outward along leading edge.



- **Spotfin Butterflyfish**– 3 to 6, Up to 8 in. Fins, (except pectoral) bright yellow. Black dot on outer edge of rear dorsal fin. Juvenile: very young have a black spot on the rear dorsal, anal and base of tail fins which, with maturity, join to form a rear body bar.



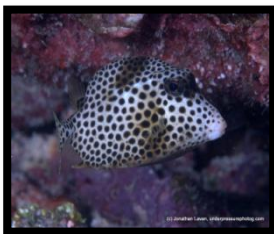
- **Smooth Trunkfish**- 6 to 10, Up to 12 in. Dark body with white spots. Area of pale honeycomb marking on central midbody. No anal spine (Smooth).



- **Slippery Dick**- 5.5 to 7, Up to 9 in. Dark triangular corners on tail. Darkish to black midbody stripe, often a second lower stripe is less distinct. Small green to yellow bicolored spot above pectoral fin.



- **Spotted Trunkfish** – 6 to 12, Up to 16 in. White body with black spots including tail. White around mouth generally present. Has anal spines.



- **Goldspot Goby** – 1.5 to 2.5, Up to 3 in. Dark bar runs from top of head across eye and down cheek. Gold spot outlined in black above pectoral fin (not obvious in some individuals).



- **Spotted Goatfish** – 5 to 8, Up to 11 in. A row of three dark rectangular body blotches is normally visible when fish are active (when resting turns to blotched or mottled reddish brown). Two barbels (elongated sensory organs) beneath chin can be folded back into grooves when not in use.



- **Cocoa Damsel** - 3 to 4 in, Up to 5 in. Usually have a black spot on tail base (coco puff). Similar Beaugregory seldom has spot. Juvenile: Black spot ringed in blue extends slightly on to the back.



- **Saucereye Porgy** – 8 to 14, up to 16 in. Short, bluish, saucer-shaped line below eye. Small, bluish blotch at upper base of pectoral fin. Corners of mouth yellow.

