







Common Fish of New England

Fishinar 7/15/2015, Janna Nichols – Instructor

Questions? Feel free to contact me at janna@REEF.org

	<p>Sculpin Family: Grubby – Size SMALL - Can be many colors/patterns for camouflage. Look for 2-3 red lines through the eyes, and a dark diagonal marking near the tail. <i>Get your grubby hands off my tail!</i> <i>[photo by Steve Audet]</i></p>
	<p>Sea Raven Family: Sea Raven – Size LARGE – Many fleshy protrusions along head and under chin. Dorsal fin is very ragged looking. <i>This fish looks stark raven mad!</i> <i>[photo by Jason Feick]</i></p>
	<p>Prickleback Family: Radiated Shanny – Size SMALL – Slender fish, with dark radiating mark from the eye along cheek. <i>Think of him as singing sea shantys and radiating joy from his face!</i> <i>[photo by Jerry Shine]</i></p>
	<p>Gunnel Family: Rock Gunnel – Size MEDIUM - Only Gunnel in NE, hangs around in the rocks. Can be various colors. <i>[photo by Amy Maurer]</i></p>



Cod Family: Pollock – Size LARGE – Silvery greenish gray in appearance. Younger fish will school, while larger ones are found by themselves. *Lateral line is straight like a POLE-lock*. Three fins designate C-O-D family.
[photo by Bob Michelson]



Cod Family: Red Hake – Size MEDIUM – Look for this weird fish in sandy, muddy habitat. Pelvic fins are long feelers to find food. *Think of them as the rake on the hake*. Also known as the Squirrel Hake.
[photo by Herb Segars]



Cod Family: Atlantic Cod – Size LARGE – Three dorsal fins (think of C.O.D.) and arching lateral line (unlike the Pollock which was straight). Nifty chin barbel.
[photo by Bob Michelson]



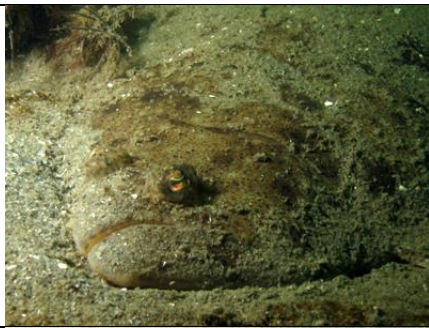
Wrasse Family: Cunner – Size MEDIUM – Very common fish. Plain brown, sometimes with darker brown bars. Base of tail (caudal peduncle) is very thick, like other members of the Wrasse family.
[photo by Herb Segars]



Wrasse Family: Tautog – Size LARGE – The Cunner's big brother. Thick, stout fish. Small mouth with thick lips and huge, conical teeth. Base of tail is thick like other Wrasses. May have irregular bars, or just appear dark on most of the body with a lighter belly.
[photo by Herb Segars]



Right Eyed Flounder Family: Winter Flounder – Size LARGE – Great at camouflage. Look for eyes very close to edge of head, and black margins to every scale. *Think of the black edging as a Winter Coat*.
[photo by Jason Robins]



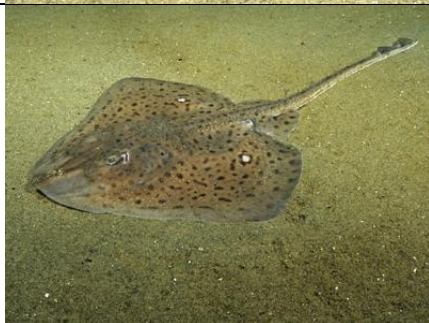
Left Eyed Flounder Family: Summer Flounder – Size LARGE – Very beefy jaw. Eyes widely separated. Thick body. Lots of ocellated spots – *think of them as sunspots in summer*. Also known as the Fluke.
[photo by Amy Maurer]



Left Eyed Flounder Family: Windowpane Flounder – Size LARGE – Long delicate dorsal fin rays that extend beyond the mouth. Very thin fish, blends in with the sand well. *Think of the dorsal fin rays as windowpanes*.
[photo by Amy Maurer]



Pipefish Family: Northern Pipefish – Size MEDIUM – The only pipefish in the Northeast. Can be various colors. Related to seahorses, male broods eggs in his pouch.
[photo by Jason Robins]



Skate Family: Winter Skate – Size LARGE – Look for white dots on fins – *think of them as snowballs in winter*. If you do not see the white dots, please mark Skate sp. on your survey form. Also known as the Thorny skate.
[photo by Andrew Martinez]