



Common Invertebrates of the South Atlantic States

Fishinar 4/21/2016, Frank Krasovec and Janna Nichols – Instructors

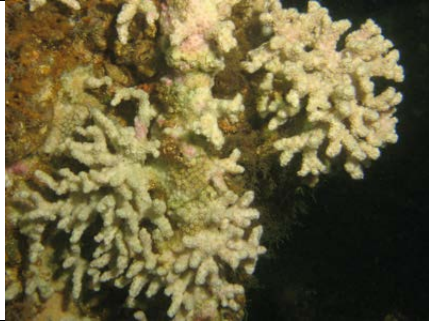
Questions? Feel free to contact me at janna@REEF.org

Phylum Cnidaria



Hidden Cup Coral, *Phyllangia Americana*
Colony height reaches 2", polyp diameter .5"
Yellowish, reddish or brownish
6 Large ridges, with 6 small ridges in between

Photo by Janna Nichols



Ivory Corals, *Oculina spp.*
Colony height reaches 2', branch diameter to 1", corallite width 0.25"
Cream to white in color (and sometimes yellow-brown), form bushy or tree-like colonies.

Photo by Janna Nichols



Regal Sea Fan, *Leptogorgia hebes*
Colony height to about 18"
Red, orange or purple branches. Single plane (flat). Lots of branches.

Photo by Frank Krasovec

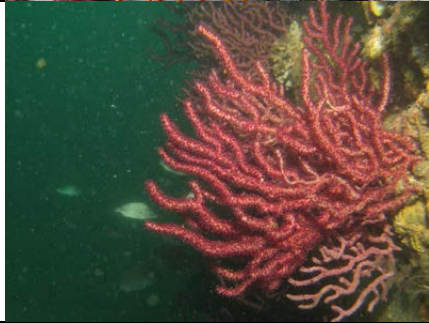


Sea Whip, *Leptogorgia virgulata*

Colony height to about 18"

Long, thin branches from single stalk. Very little branching. Purple, red, orange and yellow.

Photo by Greg McFall



White Eye Sea Spray, *Thesea nivea*

Colony height to about 18"

Bushy looking colony that's usually purple to red in color
Name is from the white center to each polyp.

Photo by Janna Nichols



Armored Anemone, *Anthopleura carneola*

Individuals 0.25" in diameter across the disk

Pretty small and found in aggregations hiding among rocks and coral. Tentacles are thick at the base, and sometimes bulbous, and thinner at the tips. White blotches or bands on the tentacles.

Photo by Frank Krasovec



Moon Jelly, *Aurelia aurita*

To 16" bell diameter

Four circular to horseshoe shaped gonads just under the bell.
White as the moon.

Photo by Carol Cox

Phylum Annelida



Christmas Tree Worm, *Spirobranchus giganteus*

Crown to 1.5"

Small, spiral trees, always in pairs. Brown, orange, maroon and white.

Photo by Frank Krasovec



Variegated Feather Duster Worm, *Bispira variegata*
Crown to 1.25" wide
Often in clusters, can have some banding or variegated markings on the radioles.

Photo by Frank Krasovec

Phylum Arthropoda



Yellowline Arrow Crab, *Stenorhynchus seticornis*
Carapace length (including rostrum): up to 2.5"
Golden-brown, thin, triangular shaped crab with yellow lines.
Colorful purple claws.

Photo by Carol Cox



Black Sea Spider, *Anoplodactylus lentus*
Up to 1.5" long
Teeny, narrow body and 4 pairs of legs. Black or dark purple colored.

Photo by Janna Nichols

Phylum Echinodermata



Purple Sea Urchin, *Arbacia punctulata*
Up to 4" in diameter
Purplish, to purple-brown, to blackish in color.
Often hide during the day, come out to forage at night.

Photo by Frank Krasovec