

## Damselfishes

**DISTINCTIVE FEATURES:** 1. Dorsal and anal fins extend only to insertion of tail fin rays into tail base. 2. Narrow dark edge on anal fin. (Similar Longfin [previous] has bright blue edge on anal fin.) **JUVENILE:** 3. Brilliant orange wash from snout across nape continuing to near end of spinous dorsal fin.

**DESCRIPTION:** Vary from light brown to dark chocolate brown. **JUVENILE:** Bluish silver-gray. Blue dot/dash markings on head and back. Large dark spot on dorsal fin and small dark spot on tail base, both ringed in white to electric blue.

**ABUNDANCE & DISTRIBUTION:** Occasional Florida, Bahamas, Caribbean; also Gulf of Mexico and Bermuda.

**HABITAT & BEHAVIOR:** Inhabit shallow surgy reefs and rocky areas, usually between 3-15 feet and rarely deeper than 20 feet. Territorial; chase away intruding fish.

**REACTION TO DIVERS:** Somewhat shy, often dart for cover within territory, but return often to peer out at diver.

**NOTE:** Formerly classified as species fuscus which is now considered to be a separate species, Bluespotted Damselfish, endemic to Brazil.

**Dusky Damselfish  
Intermediate**

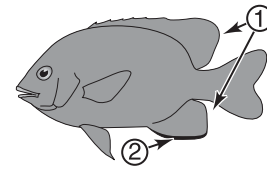


### DUSKY DAMSELFISH

*Stegastes adustus*

**FAMILY**

Damselfishes -  
Pomacentridae



**SIZE:** 2-4 in.,  
max. 5 in.  
**DEPTH:** 1- 25 ft.



**Dusky Damselfish  
Juvenile**

