



REEF-in-Brief

*The e-Newsletter of the
Reef Environmental Education Foundation*

June 2007

1. **Welcome -**

Leda A. Cunningham, Executive Director

Happy World Ocean's Month!

We hope your summer is off to a spectacular start. We're gearing up for the 16th Great Annual Fish Count (GAFC) while taking a moment to recognize the single most important part of REEF: our people. Survey Superstar Linda Schillinger just submitted her 1,000th REEF survey, volunteer Audrey Smith and interns Paige Switzer and Marissa Nuttall continue to be the backbone of REEF HQ and more than 60 of you responded with lightning speed to our Building a Stronger REEF fundraising campaign, bringing us within \$8,000 of our \$25,000 goal. In this edition, you'll also learn about recent collaborations off the coast of Monterey, California and in Mexico's Yucatan region. Finally, Joe gives you "everything you ever wanted to know but were afraid to ask" about filling out a REEF scanform.

Nineteen days until GAFC launches-make sure you've got an event to plan/host/attend! Wishing you calm seas, good viz and friendly fish in abundance,

Leda A. Cunningham

2. **Gear Up and Get Ready for the 16th Great Annual Fish Count (GAFC)**

By Leda A. Cunningham, Executive Director

The 16th Great Annual Fish Count is almost upon us! The GAFC takes place every July and serves to inspire recreational divers and snorkelers to participate in REEF's year-round Volunteer Fish Survey Project. The GAFC is a joint effort between REEF and the National Marine Sanctuaries Program to mobilize and train volunteers to document fish diversity and population trends on coral reefs and other coastal marine habitats. At a time when resources for science and management are spread thin, agencies like the Sanctuaries (and National Parks, and NOAA Fisheries and many others) need all the help they can get collecting information about the ecosystems under their charge.

REEF Field Stations are the main venue for GAFC events. Field Stations serve as satellite REEF centers, organizing fish ID seminars, survey dives and other events that bring local divers and snorkelers together during this important conservation effort. Check out [\[html\]](#) to find a Field Station near you to participate or help host a GAFC event. If you or your local dive shop is interested in becoming a Field Station, please contact Leda Cunningham at Leda@reef.org.

Here at REEF HQ in Key Largo, intern Paige Switzer is our GAFC 2007 coordinator. If you are hosting a GAFC event and have not been in contact with Paige yet, please check in with her at gafc@reef.org. Paige attends Coastal Carolina University and will be graduating in December with a degree in marine science and biology; in the future she wishes to obtain a career in coral reef management and conservation. If you need any supplies (starter kits, fish ID books, etc) for your event you may fill out a [GAFC order form](#). Please return the order form to Paige through mail, fax, or as an attachment via email.

The GAFC began in 1992 when a small group of recreational divers and marine biologists from the Channel Islands National Park conducted a standardized visual fish census. Their effort was modeled after the Audubon Christmas Bird Count and quickly grew into an annual event known as the Great American Fish Count. Due to the increase in participation and overwhelming response from REEF's international survey regions, in 2002 the Great American Fish Count officially changed its name to the Great Annual Fish Count. Last year, REEF volunteers hosted 57 events and conducted more than 1,600 surveys during GAFC 2006; there's a good chance we'll beat those numbers this year.

REEF will kick off the 2007 GAFC with an open house at REEF HQ in Key Largo on Saturday, July 7 from 6-8pm. If you're in town (this means you, all you Discovery Tour participants!), please stop by the office to meet and greet REEF staff and friends, including REEF founder Paul Humann, GAFC founder Gary Davis, local conservationists, including folks from the Florida Keys National Marine Sanctuary, and other Keys divers and conservationists. If you plan to come, please drop Kim a quick note (Kim@reef.org) so we can estimate attendance. Hope to see you in our neck of the woods; if not, happy GAFC-now go out there and survey!

[Back to top](#)

What's in this issue:

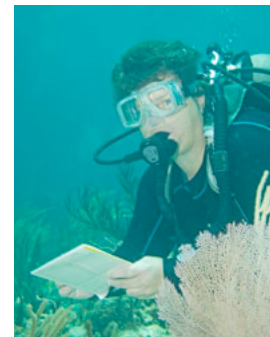
- 1 - [REEF-in-Brief June](#)
- 2 - [GAFC 2007](#)
- 3 - [Survey Superstars](#)
- 4 - [Members Gifts: How You Build a Stronger REEF](#)
- 5 - [Notes from the Field](#)
- 6 - [New REEF Field Station, Eco Bahia \(*En Espanol*\)](#)
- 7 - [Volunteering With a Heart](#)
- 8 - [REEF's New Interns](#)
- 9 - [How to Fill Out a REEF Scanform](#)
- 10 - [REEF Events](#)
- 11 - [REEF Parts](#)



3. Survey Superstars: Linda Schillinger Joins the Golden Hamlet Club

By Dr. Christy Pattengill-Semmens, REEF Director of Science

Longtime REEF member, Linda Schillinger, conducted her 1,000th REEF survey and subsequently was inducted into the REEF Golden Hamlet Club this past month. Her monumental survey was conducted on Whale Shark Wall during the recent Field Survey to the Bahamas on the *Aqua Cat* with Ned and Anna DeLoach. Linda started conducting REEF surveys in 1994 and has surveyed at an impressive 475 sites throughout Florida, the Caribbean, and Bermuda, as well as in Hawaii. Her fish lifelist includes 499 species and is a member of the Tropical Western Atlantic (TWA) Advanced Assessment Team (AAT). Linda joins a small handful of other surveyors who have achieved this milestone: Peter Leahy, Linda Baker, Lad Akins, and Judie Clee. And while these were all accomplished in the TWA, there are survey superstars in all of REEF's regions. For example, Georgia Arrow and Janna Nichols, both members of REEF's Pacific AAT, have each conducted well over 300 surveys. Similarly, Janet Eyre, an AAT member in both the TWA and Hawaii, has conducted over 300 surveys in each of those regions. Richard Baker leads the pack in the Tropical Eastern Pacific region with almost 500 surveys.



Long-time REEF surveyor Linda Schillinger is the newest member of the Golden Hamlet Club. Linda recently completed her 1,000th REEF survey during a field survey to the Bahamas. Photo by: Ned DeLoach

Congratulations to Linda and all of our survey superstars!

[Back to top](#)



REEF member Janet Eyre is an Advanced Assessment Team member in the Tropical Western Atlantic regions and currently holds the top spot as the most active REEF surveyor. Photo by: Jim Passon

4. Member Gifts: How You Help Us Build a Stronger REEF

By Leda A. Cunningham, Executive Director

Most of you received our email recently about an anonymous donor who is matching member contributions one to one for the month of June. This is a great opportunity to share with you how REEF spends your valuable donations and give you a peek behind the scenes of building a productive, relevant, fun and financially stable place to invest in ocean conservation. It starts with keeping a lean budget.

When you give REEF a dollar, approximately \$0.80 of it goes directly to REEF programs. You may be underwriting data collection sheets provided free of charge that are the backbone of the REEF dataset, currently 105,000 surveys strong and the world's largest publicly accessible living marine life database. Or you may be supporting staff participation in a scientific conference, helping fund online data entry improvements or contributing to an intern's \$500 stipend each semester. The remaining \$0.20 goes to subsidize expenses like utilities and insurance, unglamorous costs that many grants do not cover but that are nonetheless necessary to run the organization. Here is how the numbers break down for 2007 (estimates):

Revenues	
Contracts (Sanctuary monitoring and assessment, e.g.)	\$113,000 (28% of total)
Member donations	98,000 (24%)
Program services (Field Surveys, e.g.)	78,700 (19%)
Foundation support	76,450 (19%)
Sale of merchandise	42,200 (10%)
TOTAL	\$408,350



Expenses	
Fundraising and administrative	\$82,875 (20% of total)
Volunteer Fish and Invertebrate Survey Project	\$104,300 (26%)
Outreach and Education	\$62,620 (15%)
Field Surveys	\$53,344 (13%)
Monitoring and Special Projects	\$104,609 (26%)
TOTAL	\$407,748

If you ask around, you'll find that 80/20 program/admin ratio to be favorable compared to other organizations. (Finishing the year with a net income of \$602 is also probably not standard practice; we weren't kidding about lean budgeting!) The key to remaining a sustainable, mission-focused organization is keeping that ratio high while stretching the 80% as far as possible. This is increasingly difficult for REEF for three reasons:

1. Decreasing availability of government funding, our highest revenue source;
2. Rising costs of living, working and insurance in the hurricane-prone Florida Keys; and
3. Growing interest in REEF programs, resulting in fewer resources spread across more requests.



REEF is about people who care about marine life and doing something to preserve it. Here, members on the 2007 Tortola Field Survey enjoy a night dive.

This is where you come in. Even if it's only \$25, every time you contribute to REEF you chip away at that growing chunk of money we need to keep our conservation programs running. We are lucky to have a very generous and engaged membership: in the first week of the June fundraising campaign, more than 60 of you contributed more than \$17,000. We are well on our way to reaching our \$25K goal by the end of the month.

Being a best-bang-for-your-buck, little organization that could has served REEF well for fourteen years. We have put thousands of volunteers in the water counting fish (and recently, invertebrates, algae and other critters), we have documented and removed exotic invasive species on both U.S. coasts, we have contributed to a 5-year fishing ban on the harvest of endangered Nassau grouper and we have earned a strong reputation for cost-effectiveness – all with few staff, many long hours, almost zero marketing and minimal fundraising efforts.

We sincerely appreciate all of you who have helped REEF fulfill its mission so far. We envision REEF being the premiere marine citizen science organization in the near future and hope you will continue to support our valuable work by making a contribution to help build a stronger REEF.

[Back to top](#)

5. **Notes From the Field: REEF Field Survey to Monterey Bay National Marine Sanctuary a Continuing Success**

By Dr. Christy Pattengill-Semmens, REEF Director of Science

Jumping off a perfectly fine boat into 46 degree water; the boat is warm and dry and not on fire or sinking – why would anyone do that, you might ask? For 14 intrepid REEF volunteers, the answer was simple: because colorful critters, beautiful kelp forests, and a diversity of rocky reef fishes were waiting to be surveyed. During a week in May, I was fortunate to lead a great group of divers for the annual REEF Field Survey to [Monterey Bay National Marine Sanctuary](#) (MBNMS). This was the 6th year of this important project that enables divers to collect valuable marine life data while at the same time diving and learning with others interested in natural history. Our week featured great dives along the famous Carmel Bay and Big Sur coast with Captain Phil and his crew aboard the [Cypress Sea](#). When we weren't in the water, we gathered as a group to review sightings and identification tips on the area's fish species, as well as a core set of invertebrates and algae that are now monitored by REEF volunteers in California as part of a [new REEF program](#). We conducted surveys in several locations that will become new marine reserves later this summer as part of the California Marine Life Protection Act, as well as in the existing marine reserve at Pt. Lobos. The group was also fortunate to catch a glimpse behind the scenes of the world famous [Monterey Bay Aquarium](#) with MBA Senior Diving Safety Officer and REEF surveyor, Gil Falcone. Survey data from the project will be posted to the REEF online database later this month but preliminary counts include 36 fish species and 42 species of invertebrates and algae. A few of the most interesting sightings include rosy rockfish and red brotula.

To find out more about the REEF Field Survey program and join in on one of these one-of-a-kind learning and diving adventures (46 degree water not required!), visit www.reef.org/fieldsurv.

[Back to top](#)

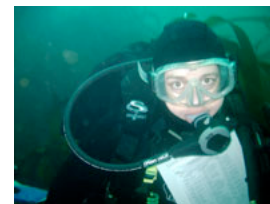
6. **REEF Volunteers Help Yucatan Resort Monitor Resources**

By Joe Cavanaugh, REEF Director of Field Operations

What do a luxury eco-friendly resort in Mexico, a thriving dive shop, and REEF have in common? A new REEF, Not-For-Profit/Academic (NAFS) Field Station in Akumal, Mexico, of course! Run by the staff at the Fundacion Ecologica Eco-Bahia (<http://www.Eco-Bahia.org>), the newest REEF NAFS is located on-site at the Gran Bahia Principe Spa & Resorts, an hour's drive south of Cancun. At the invitation of Eric Engler, President of ReefAid (A 501(c)(3) Charitable Foundation <http://www.reefaid.org>), the hotel's dive operators, and Bahia Dive Center (<http://www.bahiadivecenter.com>), we put together an *ad hoc* 4-person survey team including Joe Cavanaugh, Sheryl Shea (Cozumel), Isla Turner (outgoing REEF intern), and Danyel Addes (former REEF intern (2004)). Our team conducted a comprehensive survey of the reefs just offshore from the resort property, primarily focusing our efforts on a protected inshore reef just off the main beach. We found 102 species in the protected zone, an area hit hard by hurricane Wilma (2005), in addition to some well-established elkhorn corals located just offshore.

In addition to taking active steps to protect their coral reefs, Eco-Bahia operates a turtle hatchery and protection program; a recycling program addressing all of the resort's waste; a jungle / mangrove protection program; and a community outreach program to help educate children and visitors in matters concerning land and marine conservation.

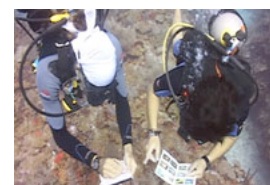
This effort was strictly a volunteer one, Joe volunteered vacation time and Sheryl Shea generously donated her time to teach a fish ID class in Spanish in addition to lending her considerable fish surveying acumen to our 5 day effort. This was a nice outgoing trip for Isla, now working at SeaCamp on Big Pine Key, and Danyel took time off from her work with Pennekamp State Park, where she works as a naturalist for their glass-bottom boat. Working together to come up with new ways of protecting coral reefs, Eco-Bahia, Bahia Divers, REEF, and ReefAid are making a real difference in preserving this developing tourism zone in the Eastern Yucatan. Please stay tuned to learn more about this new Field Station, and look for a large group gathering to survey some as-yet unexplored reefs in 2008!



REEF surveyor Norma Kreischer enjoying the cold but beautiful diving at the Monterey Bay National Marine Sanctuary. Photo by Kathy Scott



A Vermillion Rockfish, one of the many species of long-lived Rockfish that REEF surveyors might see during a dive along the West Coast. Photo by C



Bahia Principe Instructors learning their Fish ID. Photo by Eric Engler



REEF survey team in Akumal, Mexico. Photo by: Eric Engler



La Fundación Ecológica Bahía Príncipe, better known as “*Eco-Bahía*,” was born of the sense of responsibility, conscience, and concern of the *Bahía Príncipe* Resort's ownership and management towards protecting and conserving their local ecosystems that surround and comprise the resort, which consists of low-canopy jungle, mangrove, natural beaches, and coral reefs. As time passes, *Eco-Bahía* has formed alliances with various professional, governmental, charitable, and research organizations such as REEF, to help support its conservation efforts, and looks forward to forming new partnerships with a goal towards protecting its various ecosystems. From its humble beginnings of only two volunteers just a few years ago, *Eco-Bahía* now has more than 6 full-time staff members, as well as many local students and hotel staff volunteers, to help with numerous ecological projects ongoing on the property. The foundation has active relationships with various associations, including: The Red Cross; D.I.F. (Mexico's Family Development Services Agency); and SEMARNAT (Office of the Secretary of Environmental and Natural Resources.).

En Español -

La Fundación Ecológica Bahía Príncipe Tulum A.C nace por la responsabilidad, conciencia y preocupación del Complejo Bahía Príncipe por proteger y conservar los ecosistemas que lo rodean como son la selva baja, manglar y la duna, así mismo tener un bien estar con los poblados y ciudades aledaños como son Tulum, Chemuyil y Akumal.

Con el paso del tiempo, diferentes personas se han ido integrando a la Organización con diferentes profesiones, la cual la ha hecho multifacética y ha permitido que aporten distintos conocimientos a los programas que se han establecido. Con el esfuerzo y dedicación del personal hacia la Fundación Ecológica, se han logrado los objetivos trazados y obtenido resultados muy positivos. En un inicio, la Fundación contaba con tan sólo 2 personas que se dedicaban a supervisar que el desarrollo de la construcción del Complejo no afectara al medio ambiente. Hoy en día, el staff ha crecido y anualmente es apoyado por estudiantes y voluntarios que vienen a aportar sus conocimientos y desarrollar proyectos en los diferentes ecosistemas.

Actualmente, ésta Fundación tiene relaciones con Asociaciones como la

[Cruz Roja](#)

[D.I.F. \(Desarrollo Integral para la Familia\)](#)

[SEMARNAT \(Secretaría del Medio Ambiente y Recursos Naturales\)](#)

[Back to top](#)

7. **The Wonderful Volunteers of REEF**

By Kim Sovia-Crandon, Office Manager and Intern Coordinator



A lesser electric ray from Bonaire. Photo by Serena



A cleaning goby from the Bahamas. Photo by Lisa V

★ VOLUNTEERING WITH A HEART ★

*Notes from REEF's pencil pusher...
Kim*

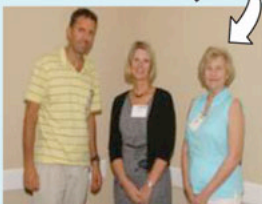
This month, at REEF's corporate headquarters, we're celebrating TEN + years, that's right count 'em, ten years of volunteer work by one of our dedicated Key Largo volunteers, AUDREY SMITH. Audrey, from what I've been told has been here since almost the start, coming into the office two days a week, comes rain or shine (except when she and husband Smitty head on vacation).

Her role is a very important one, she is the lucky person who gets handed the countless of thousands of scan forms (to the tune of roughly 105,000 surveys). If you don't know exactly what that entails, each survey is screened for errors, separated and if some information is not included she contacts those

individuals to get the correct information prior to the survey being passed on to Joe Cavanaugh, Director of Field Operations. After Joe reviews they are put into batches based by region and/or field survey, they are sent out for processing prior to being uploaded onto the REEF site.

Audrey was also chosen as REEF's Volunteer of the Year in 2000, she also received certificate of appreciation in 2005 from the Community Foundation of South Florida for her devoted and invaluable services to REEF.

This is a very mundane and boring job BUT critical for the statistical data that REEF is known for. Audrey also has been den mother for many of our REEF interns, maintaining their photo library and keeping in touch with them once they leave us to follow their dream ambitions. She volunteers and supports many of our outreach events such as Ocean Fest. Audrey (a retired school teacher of 30 years) and husband Smitty, moved to Key Largo to retire in 1997. She's the mother of two, Dana who resides in Key Largo and Todd who lives in chilly Pittsburgh. But her highlight is her two beautiful granddaughters, ages 6 and 9. For relaxation she and Smitty enjoy snorkeling in and around our wonderful patch reefs and surveying those areas. Audrey, you're a gem and REEF is so thankful for your dedication to our mission!



Audrey Smith, pictured on the right, with Joe Cavanaugh, REEF's Director of Field Operations, along with Dianna Sutton Pres/CEO of the Community Foundation of South Florida.

Thank You Isla, for volunteering in the office after your spring internship ended. Isla headed south this summer, working at Sea Camp!



REEF's **FISH QUIZ** component on the web site is taking a little summer vacation. When the **FISHES** return from some R & R we'll notify you via Enews and we apologize for the inconvenience!

[Back to top](#)

8. **REEF Interns: The Backbone of REEF Operations**

By Kim Sovia-Crandon, Office Manager and Intern Coordinator

"My interests lie in research diving and marine conservation through education and I figured studying Marine Biology would be nicer in warmer waters!"

Marissa Nuttall

Howdy . . . I am a proud member of the Fighting Texas Aggie Class of 2008! Currently, I am working towards a B.S. in Marine Biology at Texas A and M University at Galveston (TAMUG). Originally, I grew up in Singapore, then moved to England, and have now ended up in the United States. I originally heard about REEF through Our World Underwater Scholarship Society and the Scientific Diving program at TAMUG. I am particularly interested in seeing how REEF operates its educational programs to further my education and hope to get involved in a few of REEF's projects. Since this is my first visit to the Florida Keys, I am also hoping to learn a lot more about the Tropical Western Atlantic fishes whilst I'm here at REEF. This summer, amongst other activities, I will be heading the "REEF-in-Brief" monthly e-newsletter, so any comments, suggestions, or ideas will be gladly welcomed (you can email them to intern@reef.org). I hope to keep everyone up-to-date on REEF's activities and events, including the Great Annual Fish Count (GAFC) coming up in July!



See how GREAT our new interns are, they've only been here 4 days and already know how important FISH COUNTS are. But more importantly they know how much your donations mean for all of our programs.

Our Texan, Marissa, is shown to the left and our Carolina girl, Paige, is to the right.



Coming to work with REEF as an intern is one of the most exciting decisions I have ever made. As a fairly new diver (just recently advanced!), an avid lover of the ocean, and a marine biology student at Coastal Carolina University, there are a lot of aspects of this decision that I am looking forward to exploring. The non-profit organization is something I have never been fortunate enough to be a part of before now, and in the short time I have been here I am already seeing the amazing things this hard working group of divers, conversationalists, and scientists do. During my stay here, my largest contribution to REEF will be working on the Great Annual Fish Count. (REEF's event during the month of July geared toward training members to help identify and record fish species and abundance in our project locations, which further goes toward visualizing population trends.) In the future I hope to take these experiences with me in contributing to coral reef management and preservation, a career I easily chose after diving and studying the reefs off the incredible, but suffering, Jamaican coast.

"I look forward to a successful and busy summer learning the "traps", enjoying the incredible diving in Key Largo, and experiencing exactly what it takes to make a difference in our environment!"

Paige Switzer

[Back to top](#)

9.

Filling Out a REEF Scanform: the Good, the Bad, the Ugly

By Joe Cavanaugh, REEF Director of Field Operations

Hi everyone,

It's that time of year again for many of you, when you begin dusting off your slate and going underwater to start your survey season. The volume of surveys coming into REEF HQ will increase dramatically for the summer and Audrey Smith (our All Star volunteer) and myself will have our hands full checking all of your surveys. As a helpful reminder, I have put a few bullet points to consider when filling out scanforms that will guide you and help us reduce errors. Next month, I will include some tips on how to conduct Fish Surveys.

Filling Out Scanform Tips

- Always use a PENCIL (should be a different/dry #2 pencil, not the one used to fill out underwater survey sheets).
- Write your member number on your slate so that you remember it for your scanform. If you are not yet a REEF member, no worries, you can still fill out a survey. Just remember to fill in the bubble that reads "New Member" and our interns will email you an electronic welcome packet that includes your new member number for all your future surveys. Incidentally, this number may also be used on our homepage under "View Your Data" to look at the fish you have seen on any REEF survey dive you have conducted.



Isla Turner, Spring 07 REEF Intern, completing a fish



www.reef.org

SUMMER \$IZZLE \$ALE GOING ON AT THE

Take advantage of the great REEF items that have been drastically reduced for the price changes on September 1st. Check them out by going to our website (clicks of the mouse) away from some great buys for "every" member or favorite pet to your youngest grandchild. Splurge . . . because all the money purchased on line is donated right back to your favorite REEF for many of our wonderful projects.






SENSATIONAL SEAS

JUNE's hottest item . . . Sensational Seas DVD . . . Take it home!

Thanks to the generous support of New World Publications on the purchase of this wonderful DVD, while supplies last, is an unprecedented anthology of rare underwater images in the eyes of 25 divers, from professional film makers to hobbyists who get their kicks exploring uncharted waters.

ALL PROCEEDS BENEFIT REEF AND THEIR MARINE PROJECTS

Special Reef Cards

WHEN YOU PURCHASE A SET OF SIX (6) REEF CARDS - FOR ONLY \$5.00 - YOU'RE MAKING A DIFFERENCE IN OUR INTERNS PROGRAM. PLEASE SUPPORT THIS OFFER. OUR INTERNS NEED YOU AND YOU HAVE THE POWER TO MAKE A DIFFERENCE. NOTE CARDS TO SEND OUT TO FRIENDS WHEN YOU'RE ON VACATION TELLING THEM HOW MANY REEF CARDS YOU'VE PURCHASED.

- Fill in Geographic Zone code on the front and list not just the dive site but what Island/Region you surveyed, e.g., *USVI, St. Croix, Pavillion* (dive site). And if you are surveying a dive site not listed on our website, please write in “New Site” in the Dive Site name box and write whatever name the dive operator used and include lat/long coordinates whenever possible for new sites.
- Always fill in your “Bottom Time” for all species and abundance surveys, this is critically important for our data assessment since the bottom time is correlated with the number of different species seen as well as the abundance of each species seen.
- All non-diving surveys should list “Snorkel” as your average depth, even if you are snorkeling down to 100 feet. But if you are snorkeling down to 100 ft., please write that inside the dive site box. For SCUBA surveys, please write in the average depth, just one bubble filled in per survey. Average depth should be recorded where the bulk of your dive survey was conducted.
- Where it says “Please Do Not Write In This Area,” please **DO** write in there when you have unlisted species to record that are not on the inside of the scanform. You can find the species numbers on our website as well and that is very helpful if you bubble those in yourself. Remember, there are thousands of surveys that arrive each summer and only Audrey and myself checking them, so any time you can save us is most appreciated.
- Under Unlisted Species for PAC scansheets, please list only fish species, not invertebrates. Although we survey inverts in PAC, only those inverts listed inside the scanform are counted.
- On the backside of every scanform you must bubble the following fields: Date, Bottom Time, Dive Start, Avg. Depth, and Habitat. Other fields on the back are useful but not required.



A lionfish from the Bahamas. Photo by Luc LaFont

A couple of links from our webpage:

<http://www.reef.org/data/surveyproject.htm> This link tells about the fish survey project

<http://www.reef.org/data/spanishsurvey.htm> How to conduct Fish Survey in Spanish

<http://www.reef.org/data/twa/species.shtml> Link to find the 3-digit code for TWA unlisted species

[Back to top](#)

10. REEF Events

Here's what we're up to in the coming month:

[Island Sun Splash 2007](#): 6/10-6/17 in the upper Florida Keys, FL

[Citizen Science Toolkit conference at the Cornell Lab of Ornithology](#): 6/20-6/23 in Ithaca, NY

[Great Annual Fish Count](#): 7/1 - 7/31, [click here](#) for a list of events

[Paul Humann's Discovery Tour](#): 7/7-7/14 in Key Largo, FL

[Back to top](#)



11. REEF Parts - Things To Know - Here are a few notes and news bits we'd like you to know about:

• Field Survey Update (2007-2008)

Thanks to all who have made the beginning of our 2007 Field Survey year a successful start! There are still spots available on several trips for 2007, so please check our <http://www.reef.org/fieldsurv/index.htm> to take a fresh look at our Field Surveys for this year and the first two postings for 2008, **Little Cayman Grouper Moon** led by Dr. D. (Jan 20-27) and the **Turks and Caicos Islands** aboard the Aggressor II (April 19-26), led by Joe Cavanaugh. More trips will be posted in the coming weeks for 2008, so please check in from time to time. You may inquire further about any of our Field Surveys with Travel for You, Inc. at 1-888-363-3345.

• Paul Humann's Key Largo Discovery Tour (July 7-14) –

There are a few spots left on REEF's signature Field Survey with Paul. This is a great trip to learn not just your fish, but invertebrates, behavior, and get some great photos with Paul Humann! [\[Click Here\]](#)



Paul Humann's Key Largo Discovery Tour, 2005.

Here's what one of our past participants had to say about Paul's Discovery Week: *"I was about to drop out of diving, thought I'd seen it all and getting bored, but the REEF"*

opened my eyes and changed the way I dive. In the past I would rush around the reef looking only for the large charismatic fish and creatures -- knowing nothing about marine life. Now I go much slower, stopping to enjoy all the animals on the reef because I know what they are, how they function, and the role they play. As a result, every dive I see that big fish or not. Thank you REEF!"

- **"And Summer's lease hath all too short a date"** and it will be September before you know it, Cape Cod's best kept secret. There are still spots available for REEF's long England Field Survey, a below and above tour of historic Woods Hole, Plymouth, Gloucester, and Martha's Vineyard, Sept 11-16. To learn more about the trip details, please visit the Survey webpage <http://www.reef.org/fieldsurv/index.htm>. My only regret? We won't be visiting the best diving in Plymouth, the protected zone of Pilgrim Nuclear Power. I did many dives surveying and collecting fish and inverts for radiation testing at my prior job. That's why I do not need Cylume glow sticks for night dives to this day! Hope you have a great trip. For inquiries, please call Tami at Travel for You (1-888-363-3345).
- **Going on a trip?** Order Scan forms, underwater survey paper, books, and other items at the [REEF online store](#)

[Back to top](#)

Contribute Now

Please consider supporting REEF and the critical work we do by donating generously.

See You Next Month!

To subscribe or to unsubscribe, please visit our "REEF-in-Brief" page at:

<http://www.reef.org/enews/enews.htm>

To learn more about REEF, visit www.reef.org

