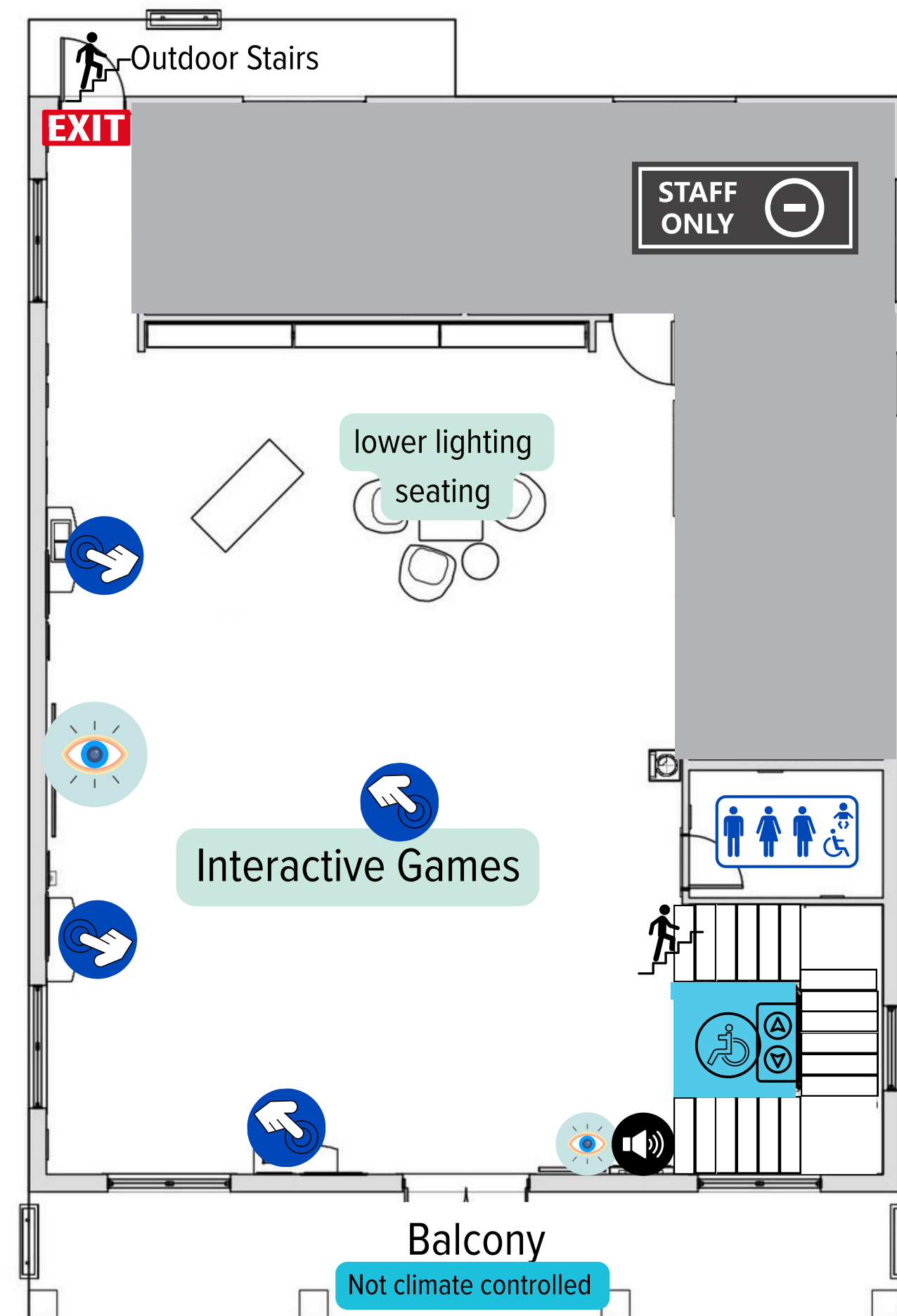
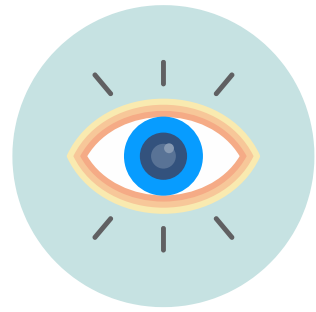


LEVEL ONE



LEVEL TWO

# Sensory Map:



## Visual Stimulant:

**Icon** represents screens with consistent moving displays consisting of repeating movies, touch screen exhibits, and touch screen games. Spot Lighting is relatively consistent through out the building. HOWEVER blue moving water lighting may be used during special events.



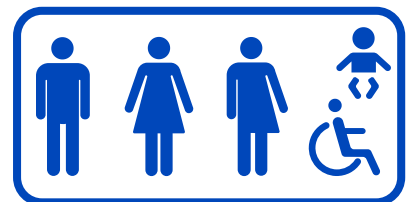
## Audio Display:

**Icon** represents screens with accompanying audio. No music is played within the building during hours of operation. One overhead announcement is played to remind guest 15 minutes before closure.



## Tactile Display:

**Icon** represents Hands-on activities. Hands-on activities and games can be found in the classroom and on the second floor of the building. Just like our living coral reefs, we asks that guests refrain from touching the large centralized REEF located on the first floor.



## Restrooms:

**Icon** represents restrooms. All restrooms are single stall, gender neutral, wheel chair accessible, and contain baby changing stations.



## Mobility:

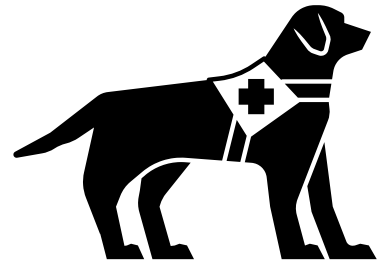
**Icon** represents mobility elevator. The building has two floors, the main stairs surround a wheel chair accessible elevator. The Center is ADA compliant and has one main entrance with handicap parking available on a first come first serve basis.

# Helpful Tips:



## Sensory Bags:

**Sensory bags** are available for check-out on a first come first serve basis. Backpacks contain adjustable Noise Reducing Headphones, Sensory Squishy Toys, and a Sensory Friendly Map of the building. We ask that all backpacks are returned to a team member with all contents before exiting the building.



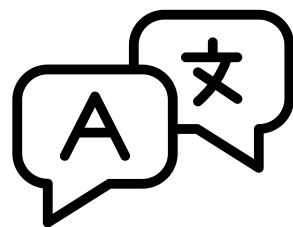
## Service Animals:

**Service Animals** that are trained to provide assistance to an individual with a disability are welcome in the building. However personal pets, companion animals, and emotional support animals are not permitted for the safety of others.



## Mobility Devices:

**Mobility Devices** such as manual and electric wheelchairs, mobility scooters, and other wheeled mobility devices are welcome in The Center.



## Language:

Our current virtual games as well as outdoor trail guides provide both an English and Spanish option. Within the building please see a staff member of translated versions of our exhibits.